

**Double your chances of
that special bargain with
our now famous**

Sale Days

Windsor 13th September 2008

10.00am to 2.00pm

Stockbridge 27th September 2008

10.00am to 2.00pm

Hive Parts, Frames, Clothing, Extractors

And much, much more at

***AMAZING* Prices**

Free, Light Refreshments available

First come - first served - So don't be late!

Thornes.....helping beekeepers keep bees



THORNES OF WINDSOR
Oakley Green, Windsor, SL4 4PZ
Tel. 01753 830256
THORNES OF STOCKBRIDGE
Chilbolton Down, Stockbridge,
SO20 6BU, Tel. 01264 810916
www.thorne.co.uk



THE ESSEX BEEKEEPER



MONTHLY MAGAZINE OF THE E.B.K.A

N0:524

EBKA website www.ebka.org

**AUGUST
2008**

Registered Charity number 1031419

ESSEX BEEKEEPERS' ASSOCIATION is an association of nine regional divisions each with its own officers and responsible for its own activities. For information concerning the divisions, please contact the Honorary Secretary of the appropriate one. They are:-

BRAINTREE: Nobby Clark-01277 220561 **CHELMSFORD:** Jean Smye: 01621 850605
COLCHESTER: Lydia Geddes-01206392226 **DH&MALDON:** Nan Field-01621 773297
HARLOW: Paul Weeks-01279 413326- **EPPING FOREST:** Ted Gradosielski
ROMFORD: Pat Allen-01708 220897. **SAFFRON WALDON:** Robert Egger-01279 850092
SOUTHEND: David Blackwood-01702 207078

Regional Bee Inspectors for EBKA:

Epping Forest, Romford Divisions: Alan Byham, 15, The Glebe, Reigate, Surrey. RH2 8NL
(excl. Brentwood) 01306 611016.email:a.byham@csf.gov.uk
All Other Divisions: Andy Wattam, 12 Woodlands Close, Wymeswold, Leicestershire.LE12 6TE.
01509 881092.email:a.wattam@csf.gov.uk

ESSEX BEEKEEPER'S ASSOCIATION

President: Derek Webber

TRUSTEES

CHAIRMAN: Ms. Pat Allen.8, Frank's Cottages,St.Mary's Lane,Upminster,Essex.RM14 3NU
Tel:01708 220897.chair@ebka.org

SECRETARY: Position Vacant at present. Please apply to the Chairman

TREASURER: Mr.Richard Ridler. Rundle House,High St.Hatfield Broad Oak Bishops Stortford,Herts
Tel:01279 718111 -email:treasurer@ebka.org CM22 7HE

GENERAL TRUSTEES:

Mr.Richard Alabone. 11,St.James Park,Chelmsford Essex.CM1 2JG
Mr.Geoff Pears.82,Lexden Rd.Colchester.Essex.CO3 3SR
Jean Smye.8,Gate Street Mews, Maldon Essex.CM9 7EF
Mr.J.Gracey, 3, Woodberry Down, Epping, Essex. CM16 6RJ
Mr.E.Fenner, 36, Chequers Road, Writtle Chelmsford, Essex. CM1 3NQ
Mr.J.McNeill, 44, Ascension Road, Collier Row, Essex. RM5 3RT
Penny Learmonth. The Watch House,Watch House Green,Felsted, Essex.CM^ 3EF
Ann Tillbrook. Glen Tanar Lodge, 137,Blenheim Chase,Leigh-on-Sea,Essex.SS9 3BX

The Essex Beekeepers Magazine is free to members of the Essex Beekeepers Association.

Editor: **Ann Tillbrook**, Glen Tanar Lodge, 137,Blenheim Chase, Leigh-on-Sea, Essex. SS9 3BX

Email: **editor@ebka.org**

Please ensure that ALL MATERIAL FOR PUBLICATION is received by the Editor, no later, than the
1st of the month preceding publication.

Queries regarding distribution should be directed to the Mailing Secretary:

Mary Heyes 01702 588009

WEBSITE Liaison: Ricky Christie: ricky.christie@virgin.net : Tel:01559 370223

All enquiries re ADVERTISING IN *The Essex Beekeeper* to the Advertising Secretary,

MARY HEYES, 18, Daines Way, Thorpe Bay, Essex SS1 3PF.

01702 588009 email: **advertising@ebka.org**

We value the support of our advertisers and hope that it will continue. When contacting them please mention

That you saw their advertisement in *THE ESSEX BEEKEEPER*



Pear & Yoghurt Shake. For 4.

Ingredients:

1 large tin pears - 425gr. 15 ozs.
240ml. (8 fl.oz.) plain low fat yoghurt
1.banana peeled.
2 tbsp.Honey
pinch ground nutmeg.

Method

1.. Mix the pears with juice, yoghurts,
banana & honey in a blender until
smooth.

2..Pour into chilled glasses, sprinkle with nutmeg & serve immediately.

Ginger Peach Smoothie: 4 Servings.

Ingredients:

240ml.(8fl.ozs.) boiling water.
1 small cube fresh ginger root, peeled & crushed
2 tbsp.honey
2 fresh peaches, peeled & chopped
570ml.(1 pint) peach sorbet
1 tabsp.lime juice.

Method:

1..Put the ginger in the hot water,
with the honey, leave until cool.

2..Blend the peaches, sorbet & lime
juice, then strain the ginger & honey
water, adding to the blender.

3..Process until you have a smooth
smoothie.



Letter from Elizabeth Day - Waltham Abbey.

When we were worried about our equipment being at risk, we decided to have a branding iron made up, with our initials and post code. This has proved very successful.

Because of this all our wooden hive parts have been safe, as you cannot wash or burn off the branding marks !! It was worth the effort.....Elizabeth Day

Letter to Richard Alabone from Veronica Eagle. - Ulcombe Kent.

Just to let you know that this year I have my Trundle system fully up & running & it works very well.. It really has made beekeeping possible, again for me and my shoulder and neck are fine, as long as I use your Trundle. Thank you very much, it really is an investment.

Book of Commemoration.

The EBKA Book of Commemoration has become very out of date. I have volunteered to collate information so that we can bring it up to date and not forget the wonderful Essex members who have contributed to the craft of beekeeping.

If you have any records within Divisions, Records and photos of your own, or would like to write about any past member, then please send me your contributions, Either by post or email.

Many thanks.

Penny Learmonth, (Saffron Walden Trustee)
the Watch House, Watch House Green, Felsted. CM6 3EF

Email:
penny.learmonth@mail.ads14less.com



AUGUST 2008

BRAINTREE

Sunday 17th August: Tel.Nobby Clark. 01277 220561.

CHELMSFORD

Mon.18th.7.30.-9pm.Trinity Hall, Methodist Church, Rainsford Road, Chelmsford. 'Preparing for HoneyShow Techniques to produce some of the finest honey & honey products.

COLCHESTER

Mon.11th.6.30pm-9.30pm. Village Hall Gt.Horkesley
ALL MEMBERS WELCOME TO DISCUSS DETAILS of CONFERENCE & OTHER IMPORTANT ISSUES.

DH & MALDON

Sat.9th. Garden Meeting at 'Home Farm' Southminster -
: RSVP: Nan, 01632 773297

EPPING FOREST

.....**No Meeting**.....

HARLOW

Thurs.7th.7.45pm. Kings Church, Red Willows.

ROMFORD

Sun.3rd.3pm.Garden Meeting & BBQ at Pat's Place.
'Winter Preparation' by Eileen Marrable.
Sun.24th/Mon.25th. Havering Show - Divisional Stand.

SAFFRON WALDON

Sat.30th.2.30.pm. 'Bee Safari' around apiaries in the neighbourhood of Saffron Waldon.

SOUTHEND

Wed.27th.7.30pm. Hawkwell Village Hall, Main Road, Hawkwell.. Talk & demonstration Preparation for Winter' by Marlene Harris

[Front page : Chelmsford Divisions' Garden Meeting at
Brian Spencer's home.



SEPTEMBER 2008

BRAINTREE Sun.14th.3pm.Maurice Bacon's Apiary. "Autumn Feeding"
Tel: 01376 583812

CHELMSFORD Mon.7.30.-9pm.Trinity Hall, Methodist Church,
Rainsford Road, Chelmsford.

COLCHESTER

DH & MALDON Sat.13th. Divisional BBQ - 42, Mill Road Burnham
RSVP. Nan Tel: 01632 773297

EPPING FOREST Sat.6th.7.30pm. Chingford Horticultural Society Hall,
Chingford.E4.

HARLOW Thurs.4th.7.45pm. Kings Church, Red Willows.

ROMFORD Friday.5th.8pm. Mock Honey Show by Terry Watson.

SAFFRON WALDON No Meeting

SOUTHEND Wed.7.30pm. Hawkwell Village Hall, Main Road,
Hawkwell.

ESSEX ANNUAL HONEY SHOW

@

BARLEYLANDS

SAT .13th & SUN.14th SEPTEMBER

**ANNUAL CONFERENCE 20TH
SEPTEMBER 2008**

THE NATIONAL HONEY SHOW
Thursday.30th October. 2pm - 6pm.
Friday 31st.October.9.30am - 6pm
Saturday 1st November.9.30am - 4.45pm.
Post code: KT15 2QS

HELP WANTED, PLEASE for THE ESSEX HONEY SHOW

Setting up on Thursday 11th September, about 11am.

At least 4 members from each division on both days -

Saturday 13th & Sunday 14th September

@

Barleylands

To man the various activities for half a day. All helpers will be issued with free entry tickets, but need to arrive before 9am. A light lunch will be available.

SHOW ENTRIES:

Lets top last years total of over 200 entries. All entries very welcome.

Gardens for the marquee entrance last year, were from Romford and Southend.....How about the other divisions adding to the display?

PETER DALBY—PEBADALE APIARIES

Agent for EH Thorne and Northern Bee Books

Also Apitherapy Supplies and advice

Large stocks held; any item to order; competitive prices

37, Cecil Road, Cheshunt, Hertfordshire. EN8 8TN

Tel/fax: 01992 622645

Open Mon—Sat (any reasonable time)

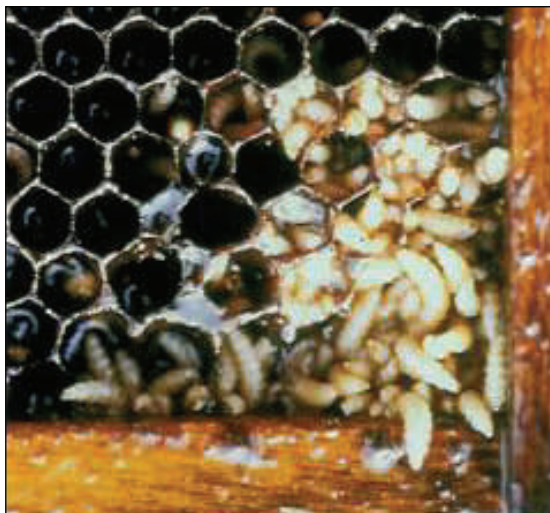
Telephone before calling. **CLOSED SUNDAY.**



Here are the larvae in the corner of a brood frame and inside some cells, adult SHB can be seen too.

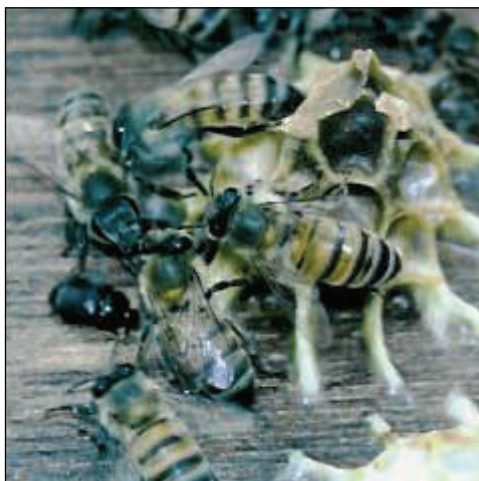
The lifecycle of this beetle includes part of its development in the ground outside the hive and they prefer sandy soil. So apiaries on this type of soil are particularly prone to attack.

Controls to prevent ants from climbing into a hive are believed to also be effective against the hive beetle. (Cinnamon) and several pesticides are being used against the SHB, applied inside the corrugations of a piece of cardboard because the corrugations are small enough to let the beetle in but keep the bees out.



Some Control Methods.

- good bee husbandry
- good hygiene practices
- good apiary management.
- Changes to extraction & honey handling procedures to limit delays.
- Use of pesticides to kill beetles in the hive & surrounding soil.



Small Hive Beetle among bees.



THE ESSEX COUNTY HONEY SHOW @ BARLEYLANDS - 2007.

The County and National Honey Shows are fast approaching and during the next month the Senior Beekeepers will be giving Talks at some Divisions about how to produce some of the finest honey and honey products. Hopefully, this will help & encourage us to enter in some of the competitions. and maybe even win a prize.

This year the Essex Show Committee have produced the Rules and Recipes in a separate issue, which accompanies this magazine, so Good Luck Everybody.

2008 is the 75th Anniversary of the National Honey Show, which will take place at St.George's College, Weybridge, Surrey. KT15 2QS.: www.honeyshow.co.uk

Free full membership is available to the National Honey Show. Free to new beekeepers who joined the beekeepers association since 1st August last year or is about to join during the course of this year.

Also there is no entrance fee for first time exhibitors, the first 4 classes entered will be free.

We are trying to promote the National Honey Show and encourage membership and there will be a full article in next months issue.

EDITORIAL



The weather seems to have settled now and here, in Essex, there have been some glorious spells of sunshine, let's hope it continues, resulting in plenty of honey.

We could show our support to the senior beekeepers by entering our honey, mead and wax products, in the Essex Show and the National Honey Show: recognising their dedication in imparting their knowledge to us all and at the same time they are studying new diseases that will likely come to the UK and the ways of controlling and containing them.

Being a beekeeper today, is so different from less than 10 years ago, when communication systems were just the telephone and the car and Essex seemed a huge area, this made beekeeping a slower hobby and beekeepers were more distant. Today, with mobile phones and the internet our County has become much easier to communicate with all beekeepers. Hopefully in the autumn, our website will be revamped and reflect all the hard work the senior beekeepers are doing for us.

This magazine has been produced in colour for the past 4 months and is on the Chelmsford website, and you can download it from there. It looks great in colour.

Nowadays, offers of FREE laptops are available with Broadband internet service at £14.99 per month - 12 month contract. This is a way of getting started and will bring the world of nature and all knowledge to you, in your home, including the EBKA website. There is now available too, special information discs, on 'How To' (software) such as Serif, who have produced software, written and spoken in every day English, especially for people new to computers and is a great opportunity to get started.

Being a beekeeper, today, is both exciting and challenging. Anyone thinking of joining - go for it... Editor
Ann Tillbrook

The Internet access to the Beekeeping world
www.beedata.com

EBKA Display Boards

Two sets of display boards are available
For Divisions to borrow for Shows, etc.

One set is retained in North Essex,
The other in South Essex.

North: Robert Pickford 01371 870351

Further to page 9..What to look for: Pictures from defra and some of my notes from Margaret Thomas...module3.

The Small Hive Beetle

(*Aethina tumida*).

First discovered in the US in Florida 1987 and have been slowly spreading with the annual migration of honeybee colonies used for pollination in other areas of the country.

Notice it's club like antennae (they remind me of a matador's hat).

When young they are a reddish brown, darkening as they mature to brownish black. They grow to about 1/4 inch.



The SHB larvae are different to other larvae because they have rows of spines on their back and 3 pairs of tiny prolegs near their heads. This is one difference from the wax moth larvae, another is the wax moth larvae burrow in straight lines but the SHB larvae burrows at random and makes a fearful mess and yet another is that wax moth are in a web like substance which retains them to a degree but these larvae are free.



THE ESSEX BEEKEEPERS ANNUAL CONFERENCE

20th September 2008.

**The Langham Community Centre
Langham, Near Colchester.**

Hosted by Colchester Division of EBKA.

SPEAKERS:

Selwyn Wilkins - DEFRA

Professor Ted Benton - Bumblebees

Essex Wildlife Trust - A Treat in Store

We look forward to seeing you all here.

Brown Beekeeping Supplies **A WIDE RANGE OF ITEMS IN STOCK**

Open Evenings & Weekends by Appointment Only
Phone/fax: **01277 841048** Mobile: **07710 178588**

**SUNNYBROOK FARM, WELL LANE, STOCK,
ESSEX CM4 9LX**

Chelmsford Division : Brian Spencer's Garden Meeting on Saturday 12th July '08

This was another delightful summer's afternoon, spent in the company of both new beekeepers and senior beekeepers.

The afternoon started with a practical session, where Robert was demonstrating, with Brian's bees on how to introduce a new queen, using the nucleus method.

This was impressive from the start as Robert made the point that he was using new gloves - to prevent cross infection from other bees which he handled in other areas. His veil was not on to start with, as if he was considering the nature of the bees and after a short while, he removed his gloves and put on the veil, because the bees became interested in his face.



Robert Pickford - Saffron Walden Division

We found the queen and here she is clipped and marked with red dot. This is taken from a photo which Geoff Mills sent to me. She was then put in a safe place and Robert carried on inspecting but there was a surprise waiting a few frames along from the queen.



Yes! This beautiful sealed queen cell appeared

Helen Spencer had prepared a lovely afternoon tea for us, which we all thoroughly enjoyed, over a buzz.

Robert then talked about queen cell grafting and Richard discussed his latest invention...a multi-queen mating hive. This was incredible and one could see that a lot of thought and experience of working with bees had been applied, in order to get this result.

The size of the six mini hives combination were based on the comb honey frames (3 to a super frame), the reasoning being that other frames were too small and wood was used after finding polystyrene was not suitable in a hive of this size. Standing beside the multi-hive on its side, is a polystyrene outer cover, which is painted.

Thank you Helen & Brian for such a lovely day.



Richard Alabone



Richard's queen mating hives

Small Hive Beetles Seen Near York - by RICHARD RIDLER.

The small hive beetles were sharing a class A isolation room with some Colorado beetles in DEFRA's impressive central science laboratory at Sand Hutton near York. We had entered the isolation facility via an air lock, donned a compulsory cold red lab coat taken from a freezer at minus 15C and passed through a further security corridor also at minus 15C before entering the room. There were both beetles and larvae in separate containers kept securely in a Perspex 'cupboard'. The larvae were wriggling around and the characteristic bobbles were easy to see at the end of the beetles' antennae.

The laboratory is experimenting with beetles and larvae to better understand their lifecycle in anticipation of them arriving here. They are currently well established in North America and Australia where no effective method of containment has been found. The larva burrow through combs consuming brood and stores, they can quickly devastate a hive and cause the colony to collapse. The larvae wriggle out of the hive and burrow into the surrounding soil from which the beetles emerge to seek out new hives to infest.

The visit to the beetles was part of a disease liaison coordinators course that Eileen Marrable (Romford), Jean Smye (Maldon) and I went on in July. We spent two days learning about diseases which included inspecting combs with EFB and AFB and using pregnancy type testing kits to test for EFB and AFB. We are now ready and waiting to advise and help you with diseases in your apiaries. We compliment our bee inspectors and along with them want to increase awareness and knowledge about bee diseases. We are all very willing to share what we learnt with you at your divisional meetings.

Richard Ridler (Saffron Walden)